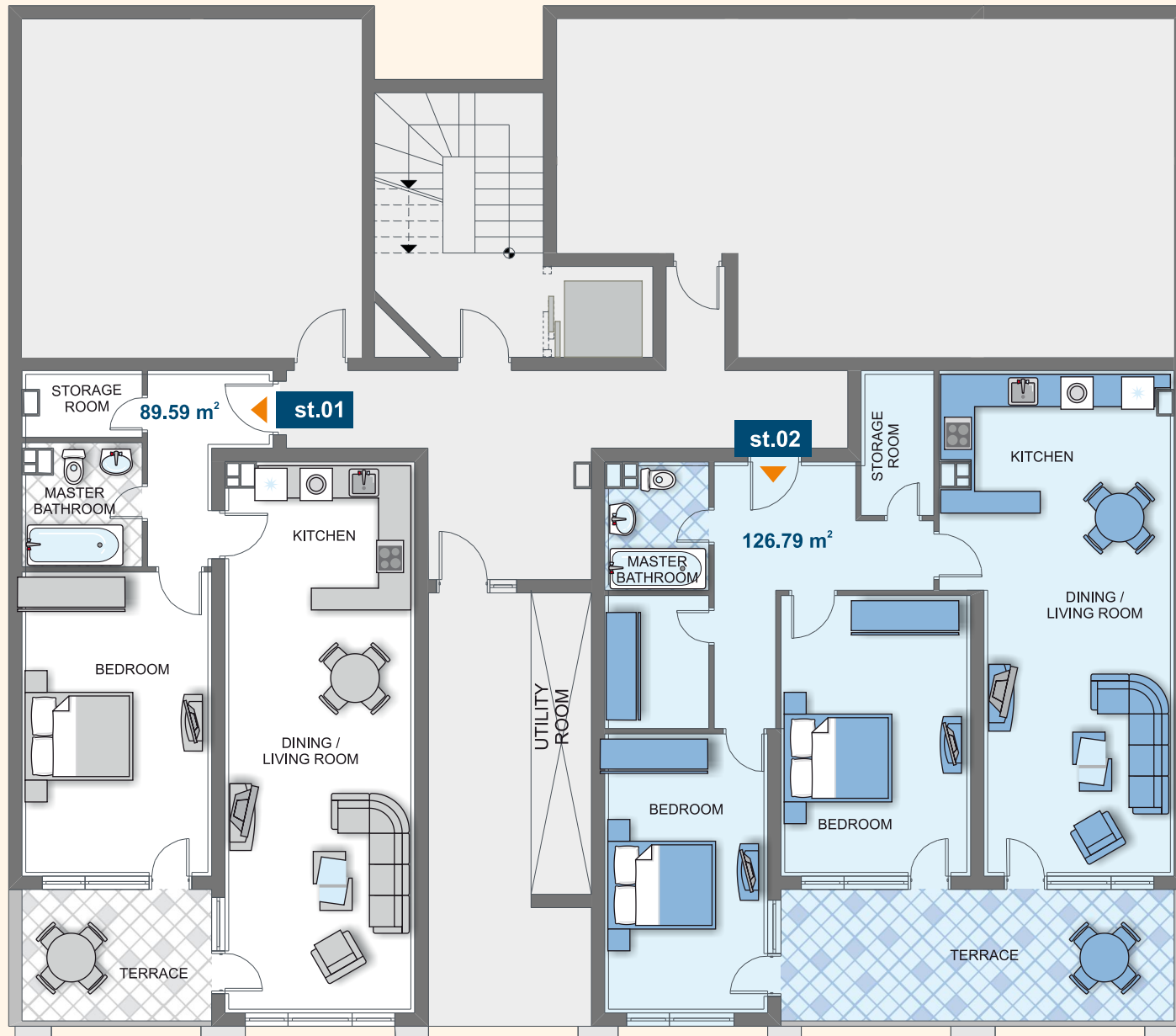
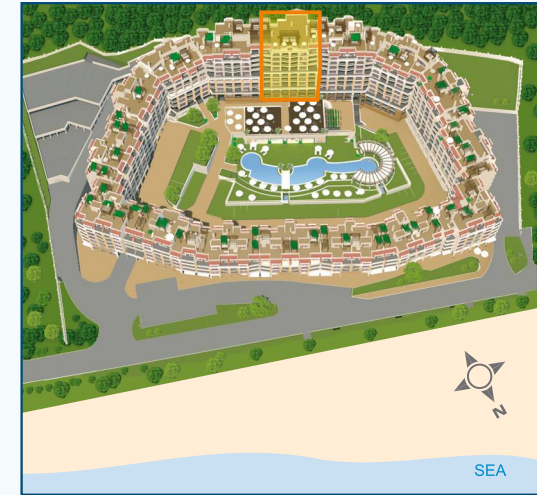


# Duke's Hall



POOL & GARDEN VIEW

entrance 12

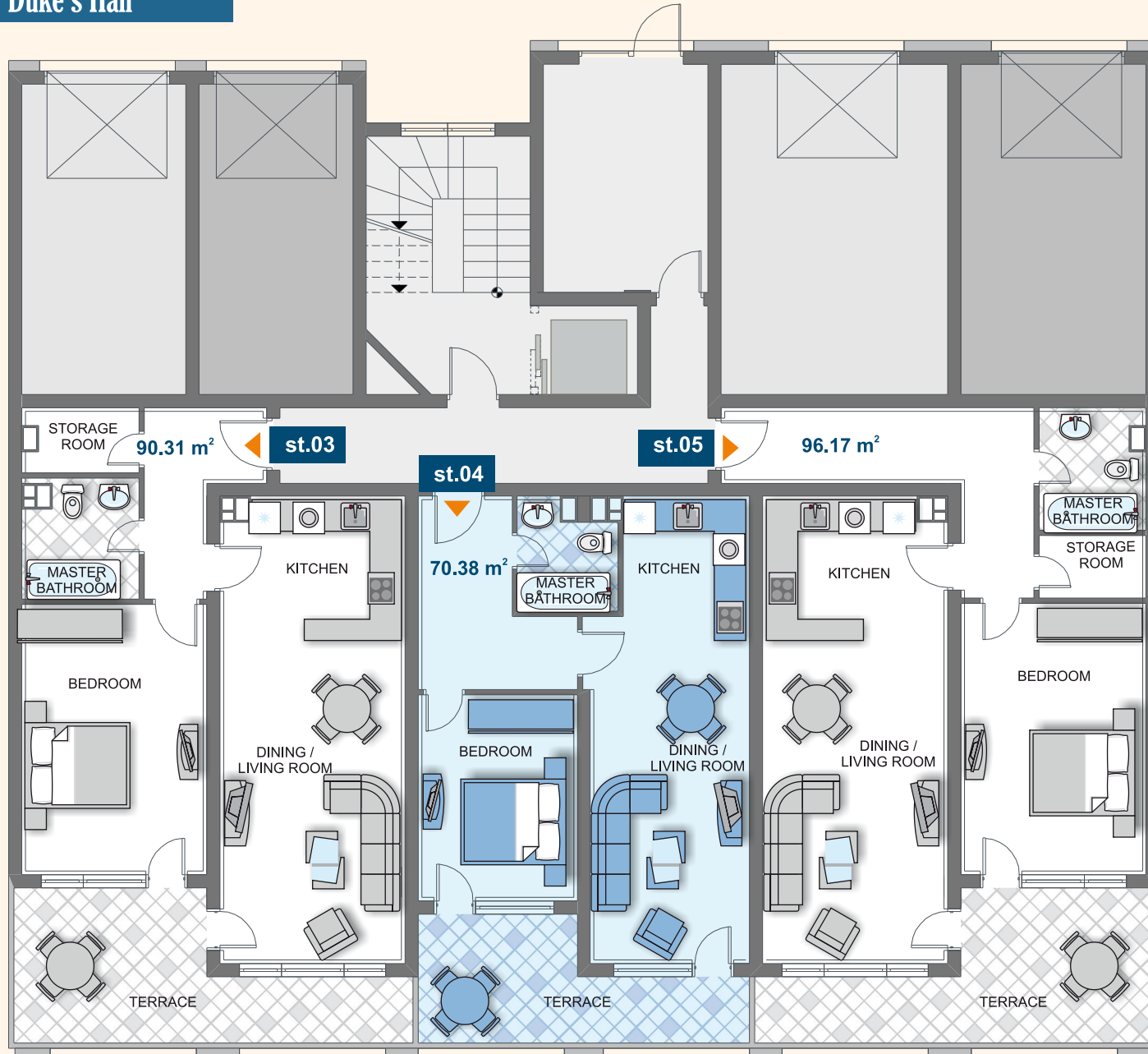


ground floor 1



Type	Floor	Area	Terrace	Total Area
st. 1	G1	89,59	-	104,47
st. 2	G1	126,79	-	147,85

# Duke's Hall



POOL & GARDEN VIEW

entrance 12

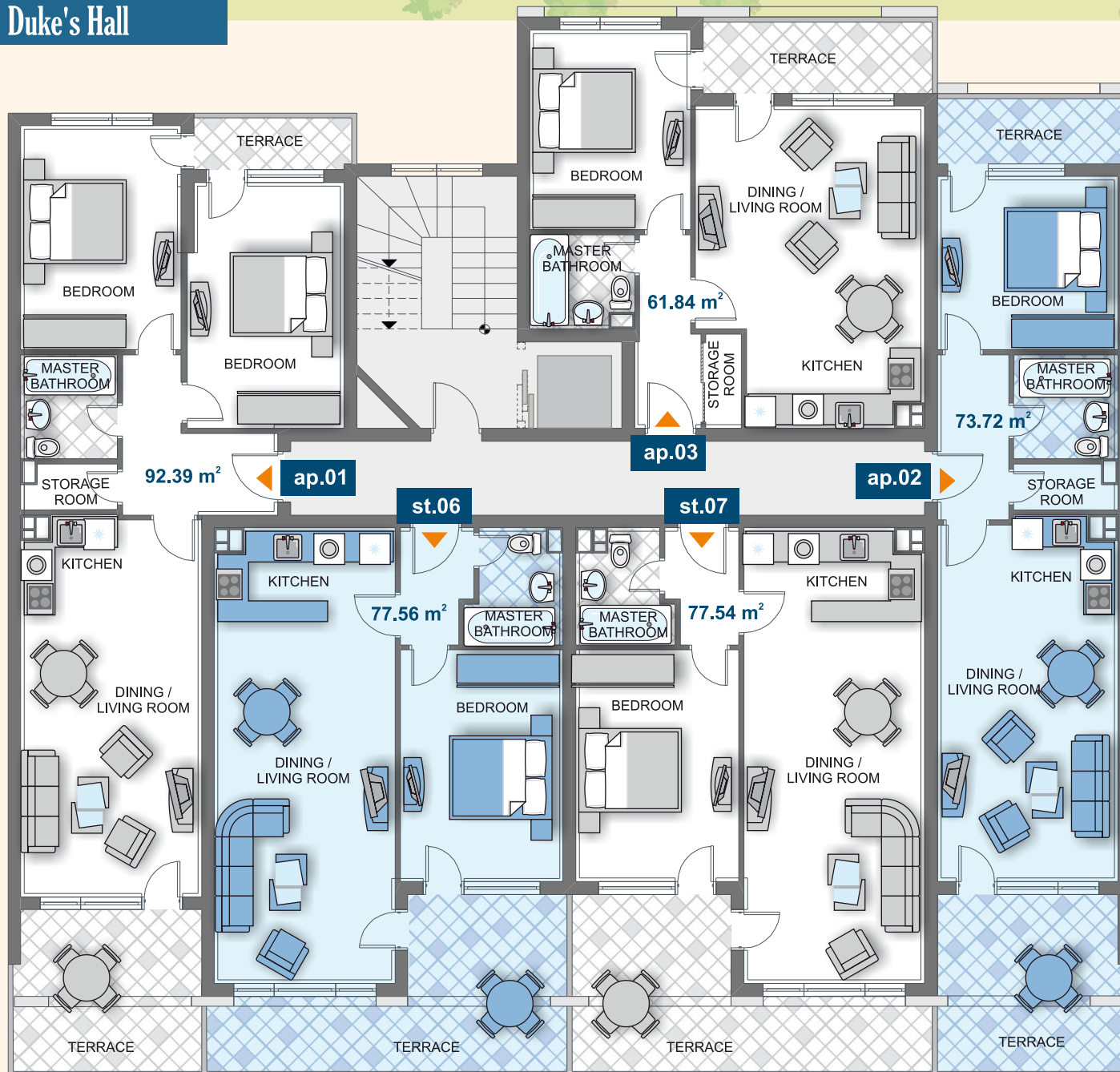


ground floor



Type	Floor	Area	Terrace	Total Area
st. 3	G	90,31	-	105,31
st. 4	G	70,38	-	82,07
st. 5	G	96,17	-	112,15

# Duke's Hall



POOL & GARDEN VIEW / SEA VIEW

entrance 12

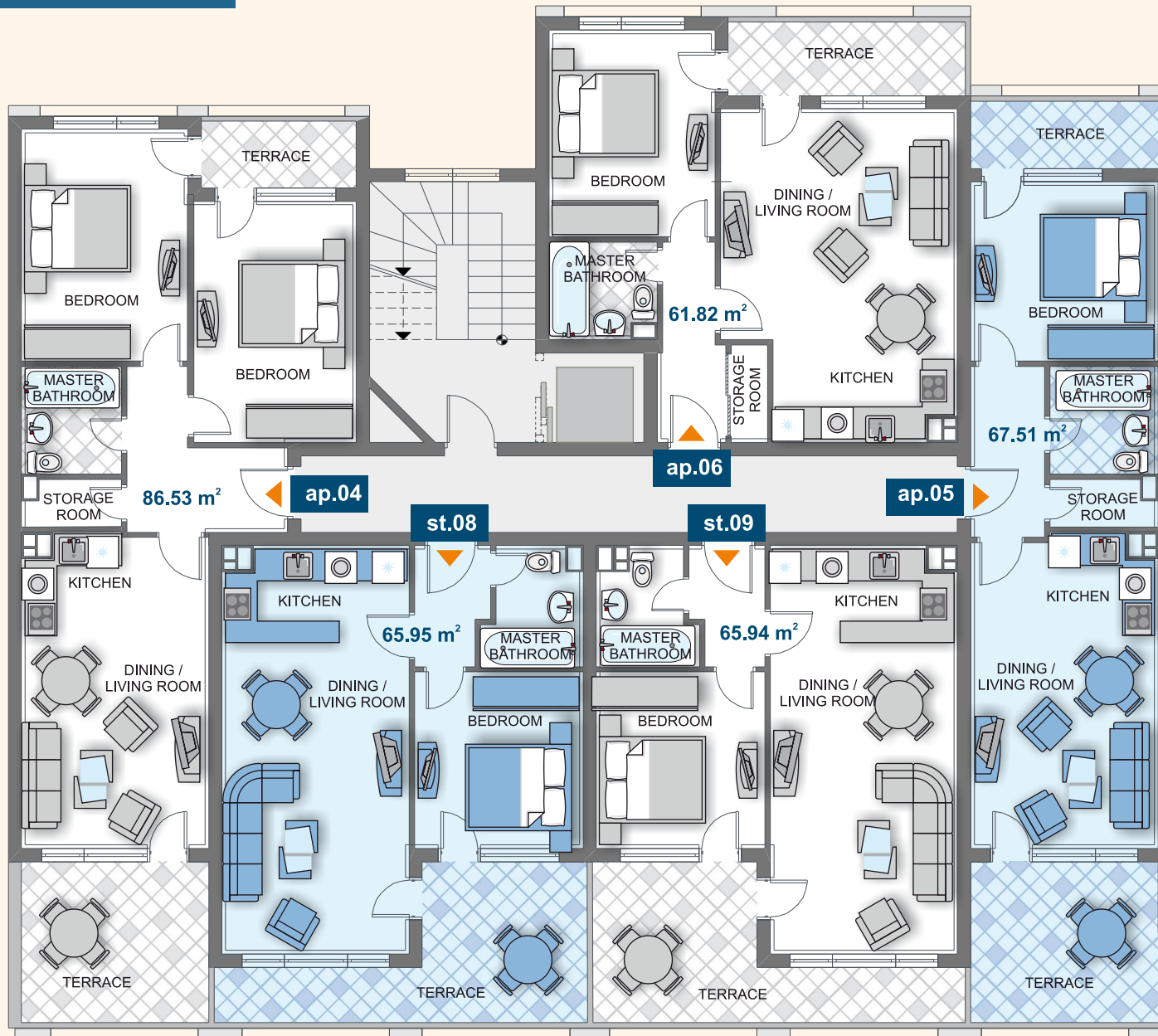


floor 1



Type	Floor	Area	Terrace	Total Area
ap. 1	1	92,39	-	106,97
st. 6	1	77,56	-	90,44
st. 7	1	77,54	-	90,42
ap. 2	1	73,72	-	85,35
ap. 3	1	61,84	-	73,95

# Duke's Hall



POOL & GARDEN VIEW / SEA VIEW

entrance 12

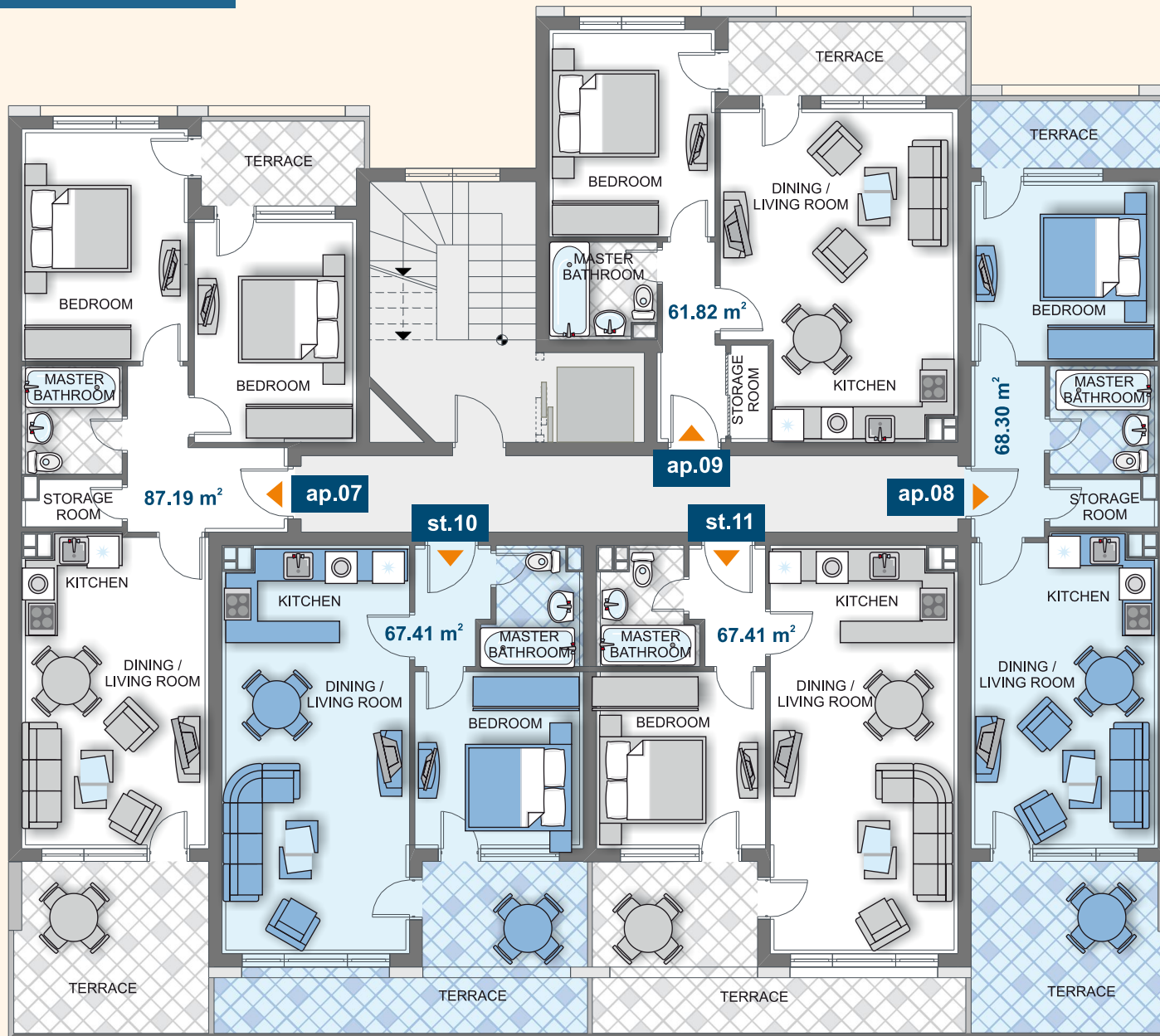


floor 2



Type	Floor	Area	Terrace	Total Area
ap. 4	2	86,53	-	101,33
st. 8	2	65,95	-	76,90
st. 9	2	65,94	-	76,89
ap. 5	2	67,51	-	85,16
ap. 6	2	61,82	-	76,36

# Duke's Hall



POOL & GARDEN VIEW / SEA VIEW

entrance 12

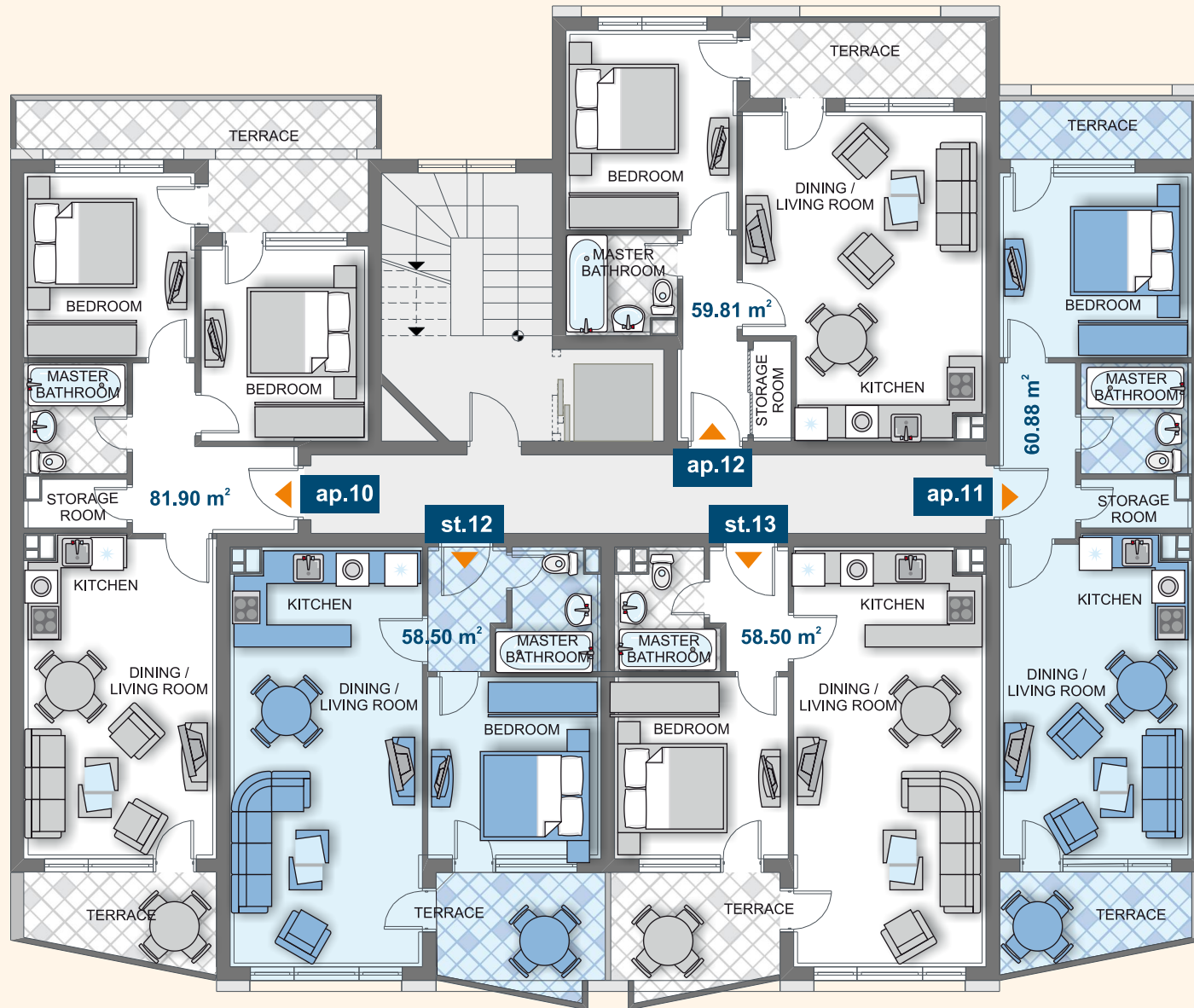


floor 3



Type	Floor	Area	Terrace	Total Area
ap. 7	3	87,19	-	102,11
st.10	3	67,41	-	78,61
st.11	3	67,41	-	78,61
ap. 8	3	68,30	-	84,15
ap. 9	3	61,82	-	79,26

# Duke's Hall



POOL & GARDEN VIEW / SEA VIEW

entrance 12

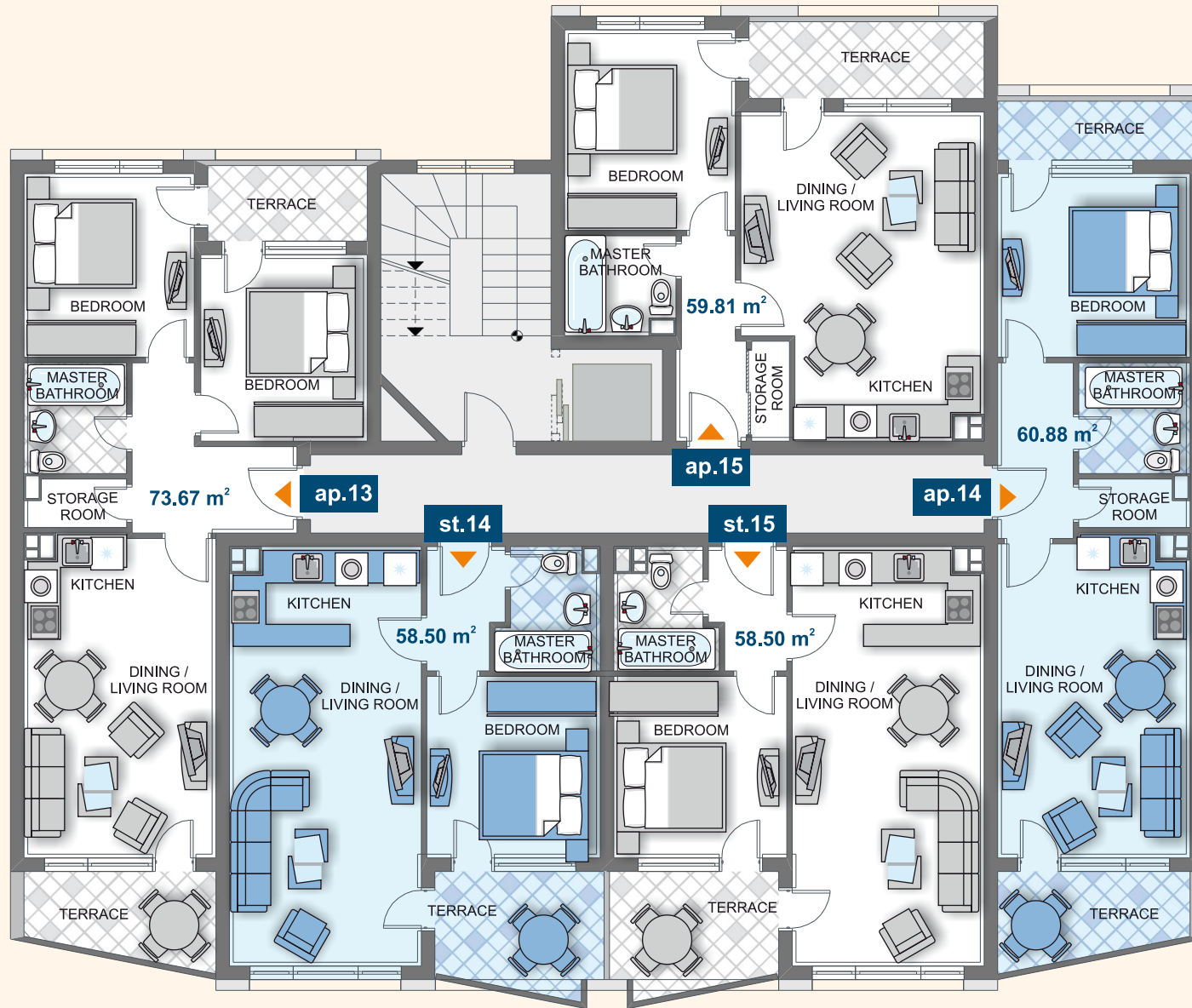


floor 4



Type	Floor	Area	Terrace	Total Area
ap.10	4	81,90	-	95,91
st. 12	4	58,50	-	68,22
st. 13	4	58,50	-	68,22
ap.11	4	60,88	-	76,16
ap.12	4	59,81	-	72,50

# Duke's Hall



POOL & GARDEN VIEW / SEA VIEW

entrance 12



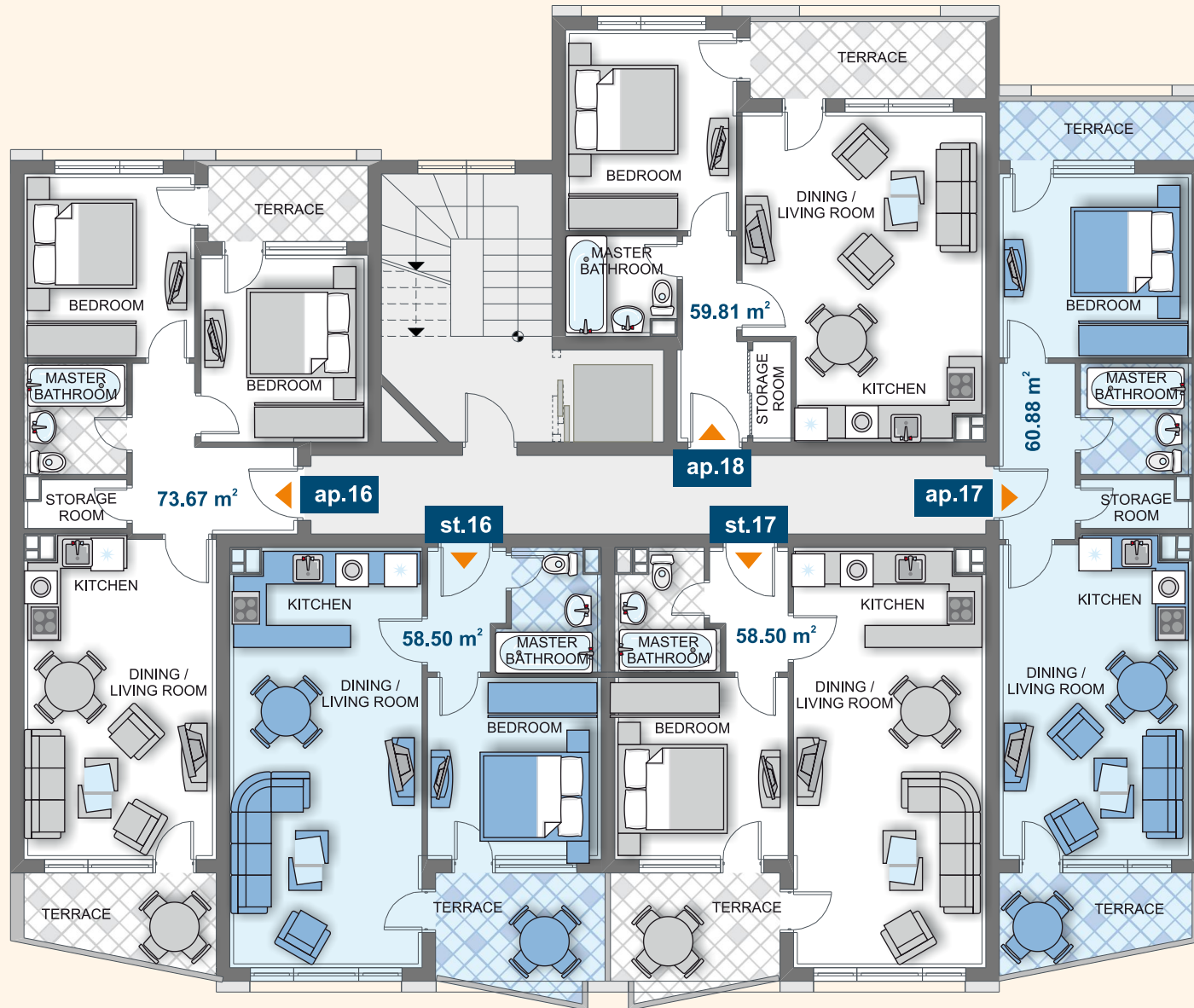
floor 5



Type	Floor	Area	Terrace	Total Area
ap.13	5	73,67	-	86,27
st. 14	5	58,50	-	68,22
st. 15	5	58,50	-	68,22
ap.14	5	60,88	-	74,61
ap.15	5	59,81	-	73,19

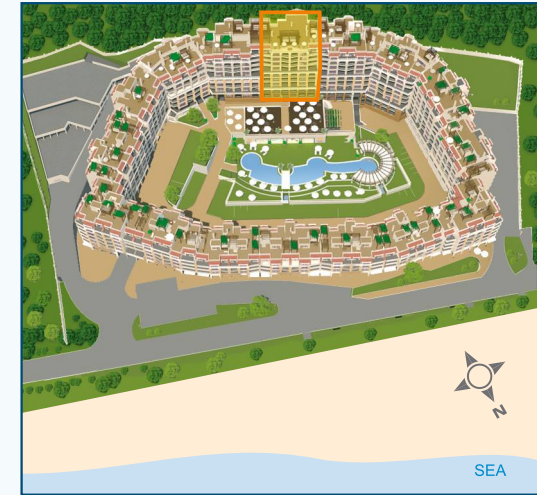


# Duke's Hall



POOL & GARDEN VIEW / SEA VIEW

entrance 12



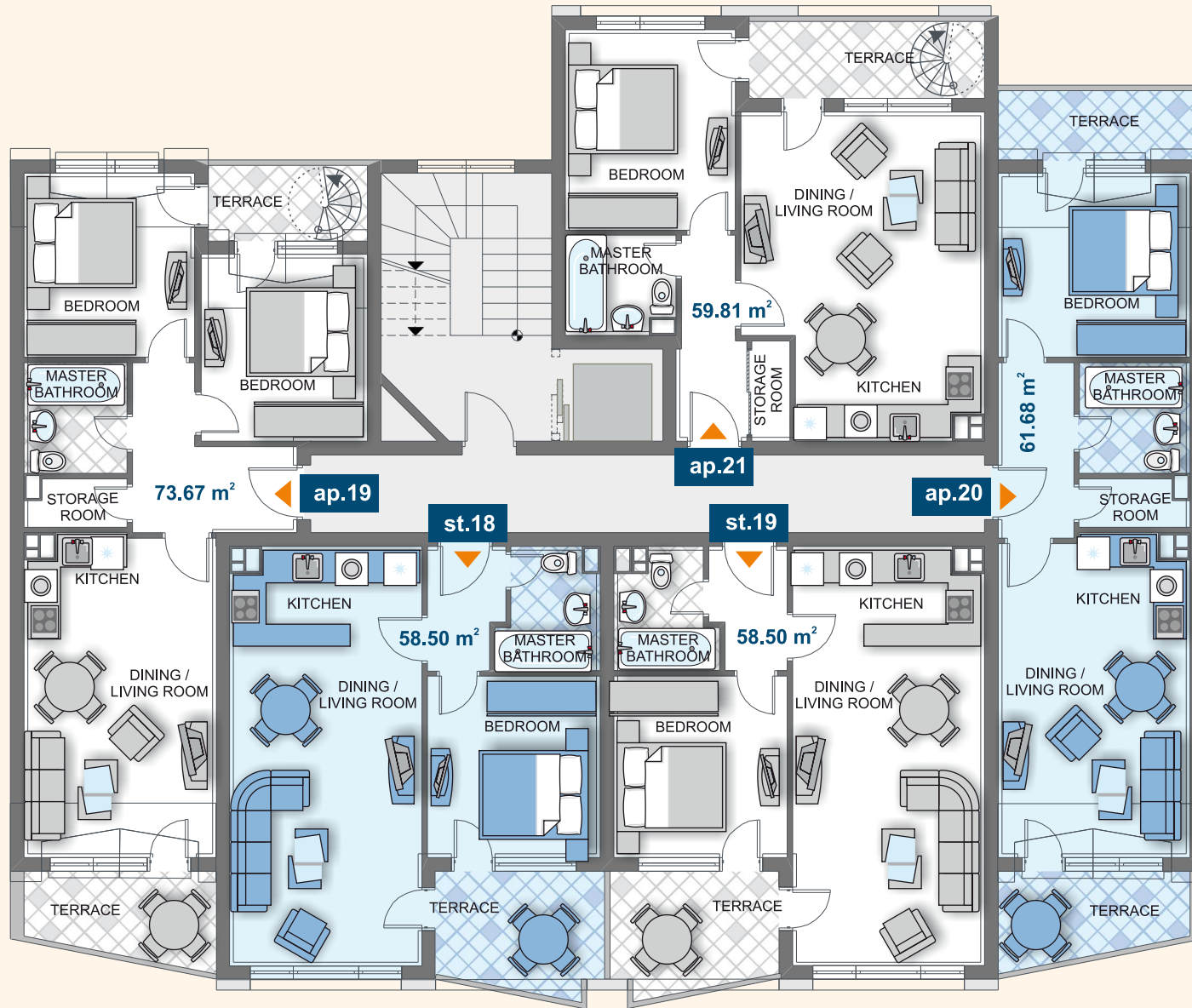
floor 6



Type	Floor	Area	Terrace	Total Area
ap.16	6	73,67	-	85,91
st. 16	6	58,50	-	68,22
st. 17	6	58,50	-	68,22
ap.17	6	60,88	-	76,70
ap.18	6	59,81	-	75,84

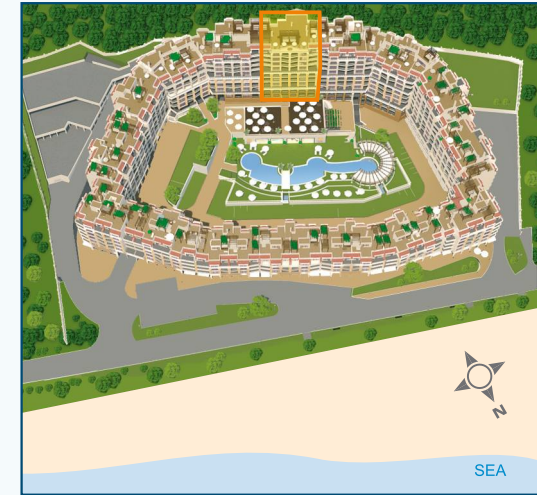


# Duke's Hall



POOL & GARDEN VIEW / SEA VIEW

entrance 12

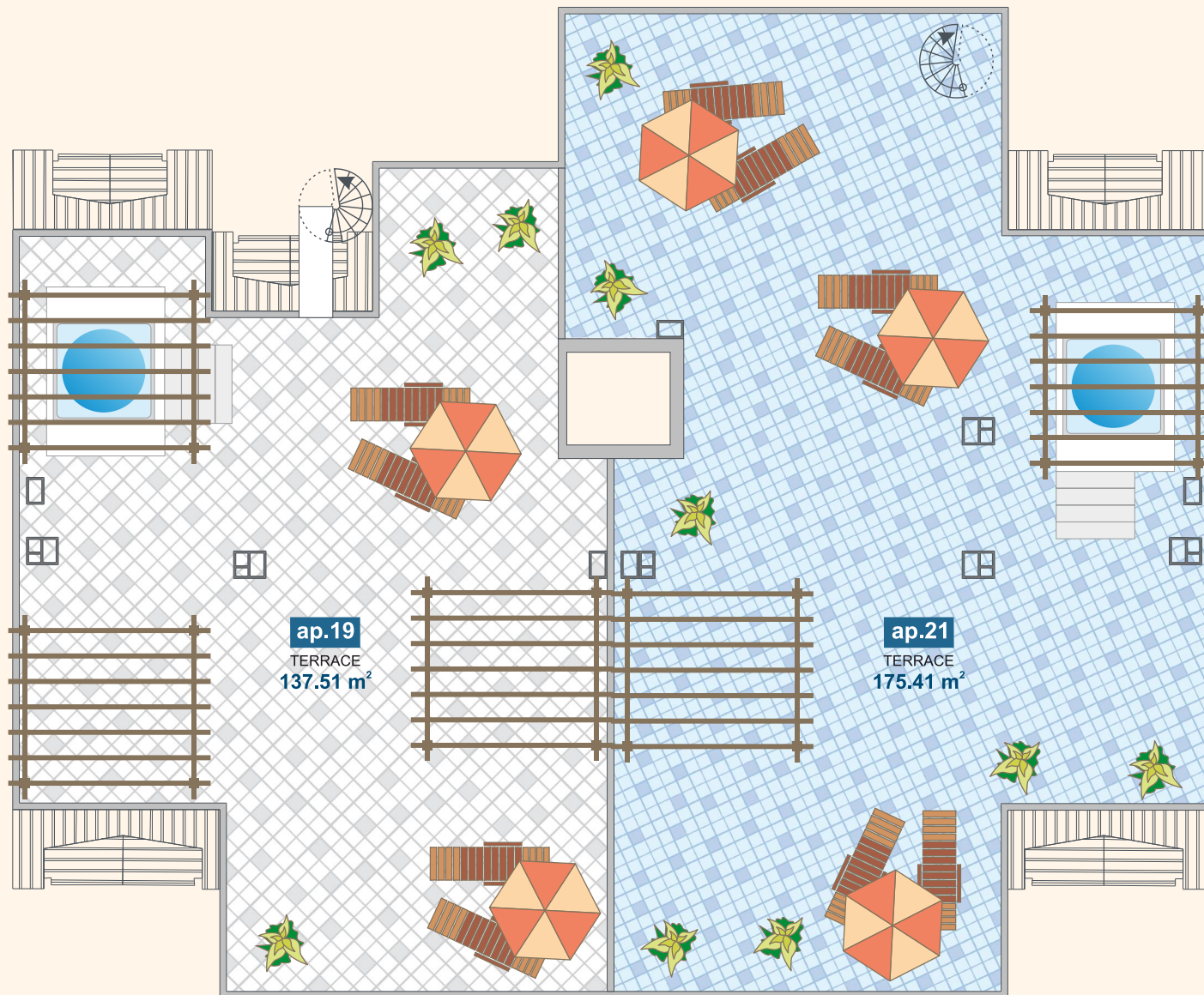


floor 7



Type	Floor	Area	Terrace	Total Area
ap.19 ▶	7, 8	73,67	137,51	223,42
st. 18	7	58,50	-	68,22
st. 19	7	58,50	-	68,22
ap.20	7	61,68	-	77,05
ap.21 ▶	7, 8	59,81	175,41	249,79

# Duke's Hall



POOL & GARDEN VIEW / SEA VIEW

entrance 12



floor 8 / roof



Type	Floor
◀ ap. 19 - terrace	8
◀ ap. 21 - terrace	8

